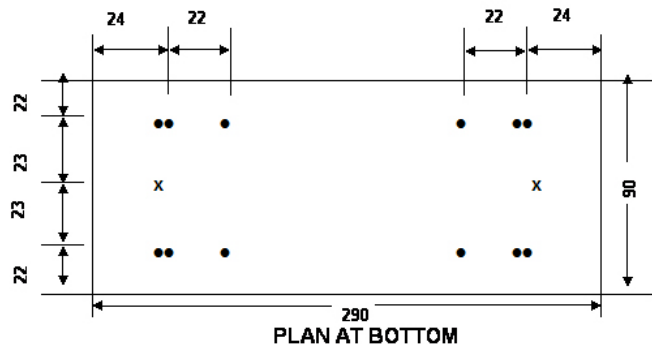
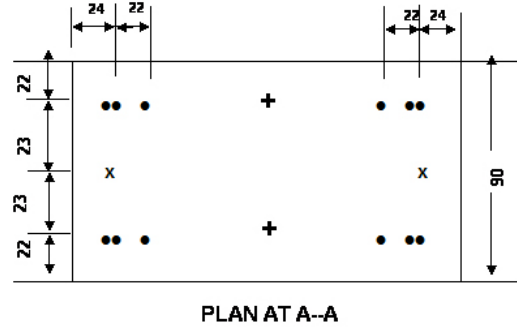
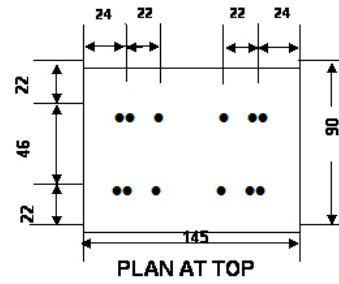
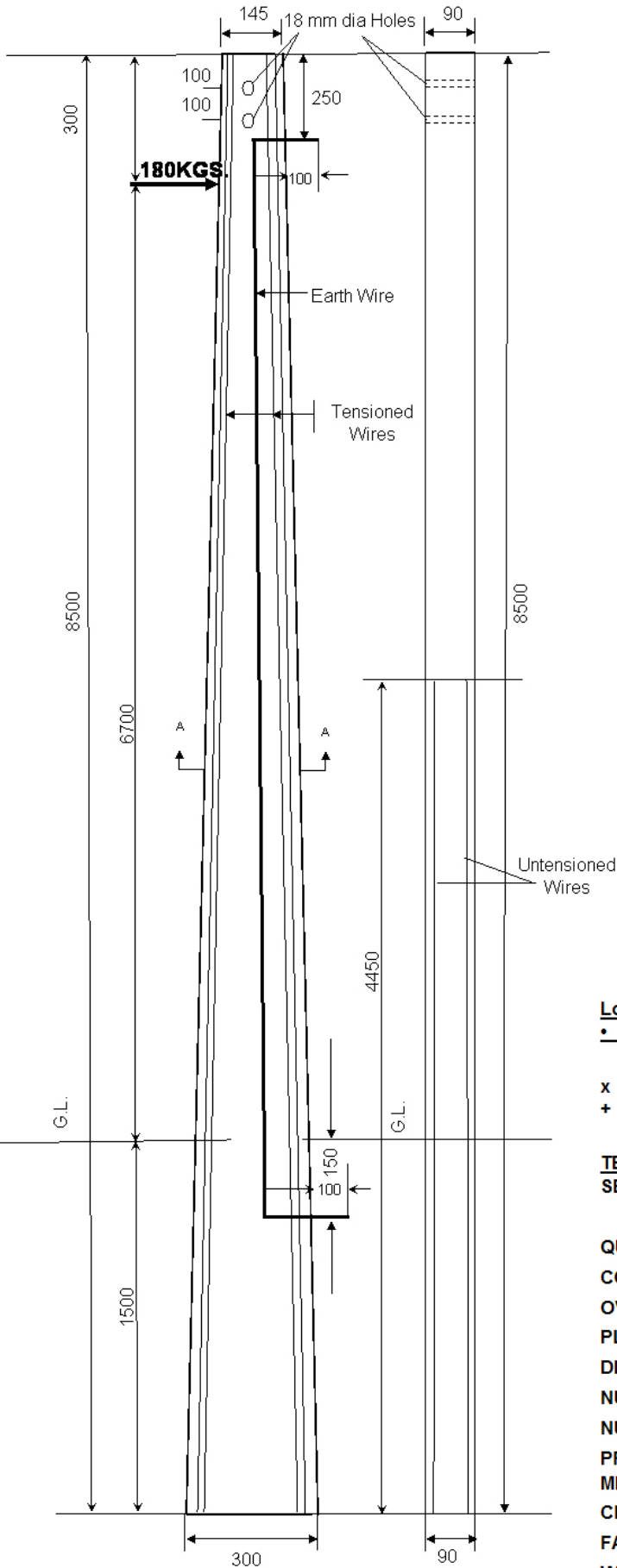


REINFORCEMENT DETAILS OF 8.5M/180KG PRESTRESSED CEMENT CONCRETE POLES (FACTOR OF SAFETY = 2.5)



Location of holes as per REC Standards

- Denotes Tensioned Wire

- x Denotes Untensioned Wire
- + Possible Position of Earth Wire

TECHNICAL GUARANTEE PARTICULARS OF 8.5mtr/180KG WORKING LOAD

SECTION: A) TOP	145 X 90 MM
B) BOTTOM	300 X 90 MM
QUANTITY OF CONCRETE	0.170M ³
CONCRETE GRADE	M-440
OVERALL LENGTH SUPPORT	8.5 MTR
PLANTING DEPTH	1.5 MTR
DIA METER OF PRESTRESSING WIRE	4 MM
NUMBER OF TENSIONED WIRES	12 NOS
NUMBER OF UNTENSIONED WIRES	2 NOS
PRE-TENSIONED APPLIED TO EACH 4MM WIRE	1760KGS
MINIMUM CUBE STRENGTH OF CONCRETE AT 28 DAYS	440 KG/CM ²
CLEAR COVER	20 MM
FACTOR OF SAFETY	2.5
WORKING LOAD	180 KGS
ULTIMATE LOAD	450 KGS
WEIGHT OF POLE (THEORITICAL)	415 KGS
LOAD APPLICATION AT A POINT FROM THE TOP	300 MM
UNTIMATE TENSION STRENGTH FOR 4MM WIRE	17500KG/CM ²

ELEVATION

SIDE